



## Transition Planning

May 7, 2020

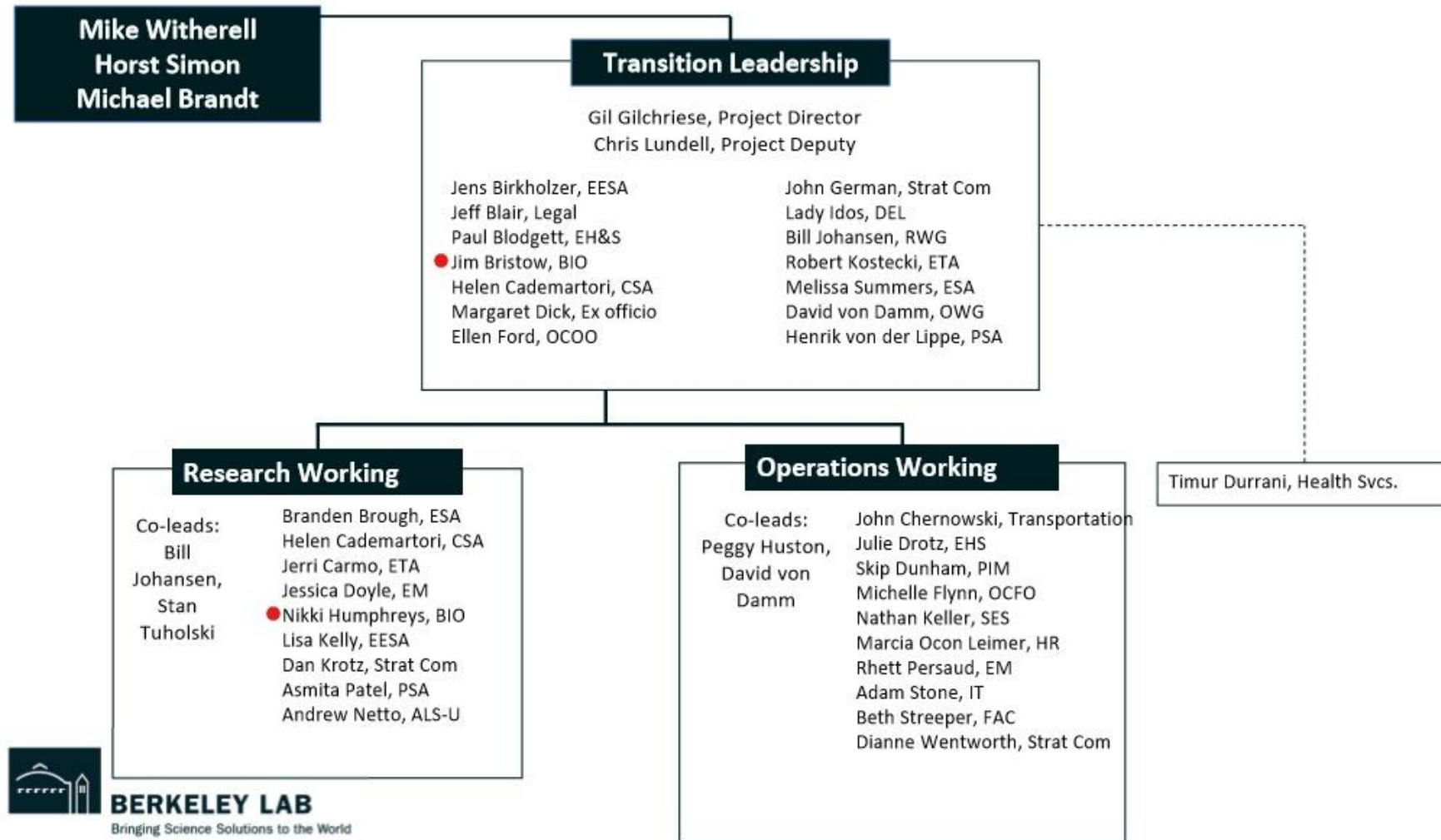
- Cases Statewide
  - 58,815 Total Cases
  - 2,412 Fatalities (4.1%)
  - High case-fatality rate suggests not enough testing.
- Alameda County
  - 1,863 Cases
  - 66 deaths (3.5%)
  - Ditto re: testing!
- Public Health Orders
  - State mostly locked down through May
  - Phased return-to-work strategy in June

# State Requirements for Resumption of Operations

- Stability of Hospitalizations
- Personal Protective Equipment Inventory
- Health Care Surge Capacity
- Testing Capacity
- Contact Tracing Capability
- Public Health Guidance in Place

- Collaborate with Lab leaders to plan the safe resumption of our on-site activities.
- Recommend to Lab leaders guiding principles for decision making, following DOE guidance, consistent with executive orders from state & local authorities.
- Develop plan for a staged recovery and implementation by line management from the current Safe and Stable Standby status to a full resumption of Lab science and operations.
- Base recommendations on the output of Research & Operations working groups
- Ensure that the highest priority throughout the transition will be the safety and well-being of the Laboratory community.

# Transition Leadership Team Org Chart



- Lab is scaling operations with the goal of minimizing & preventing viral exposure
- Return to work will be a dynamic process
  - Could go backwards/forwards in the process based on safety issues:
    - Number of cases identified at the Lab (*if any*)
    - State / Local health orders
    - DOE guidance
- Increases to workers on site will be phased slowly, evaluated by leadership, and approved by DOE before introducing additional workers on site
- Process for prioritizing return to work is under discussion.
- For the foreseeable future, many of us will be operating in the current telework-focused environment

- Approval of line management (Supervisor, Division Director, Ops Deputy) required prior to coming onsite
- A process for employee health checks & reporting is under development
- Once on site:
  - Face coverings required
  - Time on property should be limited to minimum required for approved purpose
  - Social distancing must be maintained