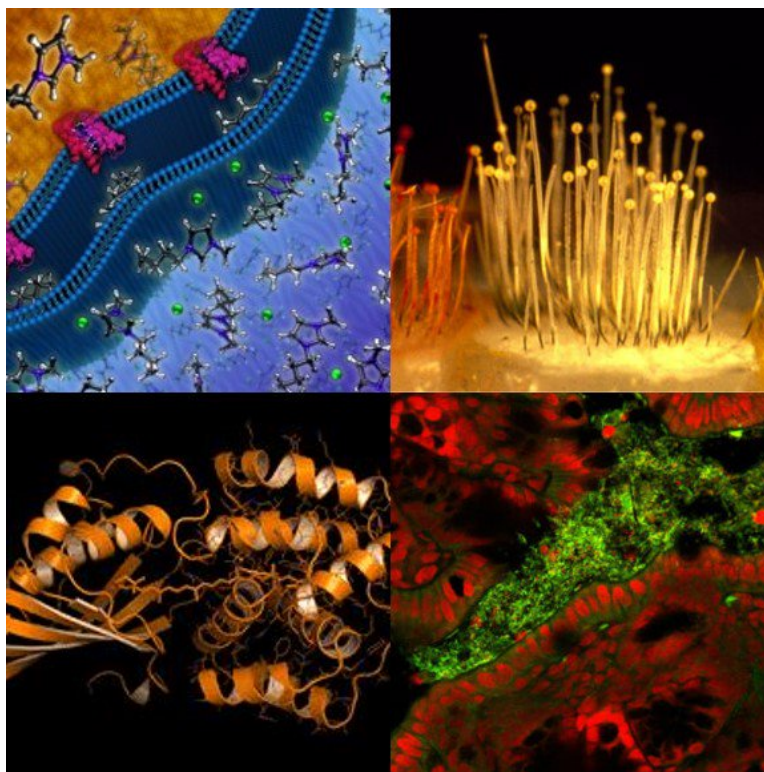


Storify by LBNL BioSci a year ago

# Biosciences Area Celebrates Twitter Anniversary

In celebration of the one year anniversary of @LBNLBioSci, our team has released a listicle on seven of the Area's bacterial, fungal and microbial discoveries together with a Twitter campaign.



Celebrating our 1st [#TwitterAnniversary](#) w/a [#Listicle](#) on 7 discoveries [@LBNLBioSci](#) [#bacteria](#) [#fungi](#) [#microbes](#) [ow.ly/TedB3086pet](https://ow.ly/TedB3086pet) [pic.twitter.com/2pb12Gqman](https://pic.twitter.com/2pb12Gqman)

 LBNL BIOSCI @LBNLBIOSCI · A YEAR AGO



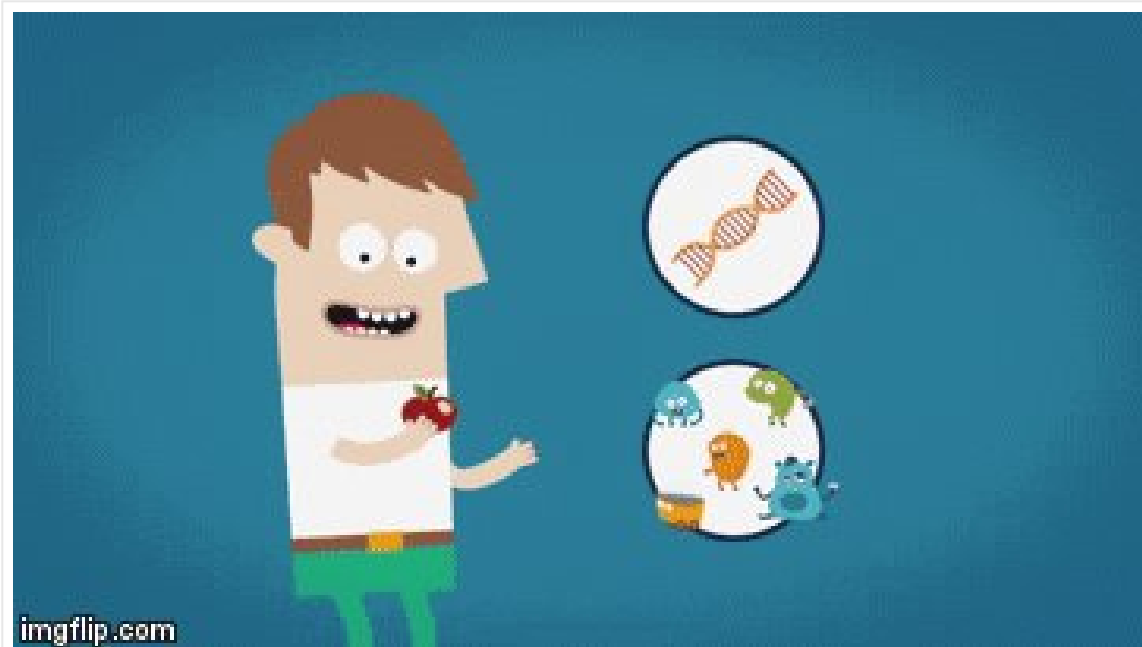
Rainforests hold clues 4 more efficient [#biofuel](#) production. [#microbes](#) [#biomass](#) [@jbei\\_](#) [#BioBSE](#) [#LBNLBioSciFlashback](#) [ow.ly/TedB3086pet](http://ow.ly/TedB3086pet) [pic.twitter.com/nEoGZY1hNq](http://pic.twitter.com/nEoGZY1hNq)

 LBNL BIOSCI [@LBNLBIOSCI](#) · A YEAR AGO



Genome sequences provide clues to the evolution of sensory perception in [#fungi](#) [@doe\\_jgi](#) [#LBNLBioSciFlashback](#) [ow.ly/TedB3086pet](http://ow.ly/TedB3086pet) [pic.twitter.com/tqKKMuofQg](http://pic.twitter.com/tqKKMuofQg)

 LBNL BIOSCI [@LBNLBIOSCI](#) · A YEAR AGO



The 'hometown effect,' genetics play key roles in sculpting the #gut #microbiome #BioBSE #LBNLBioSciFlashback ow.ly/uhCF3086rJ5 pic.twitter.com/xx8XJAaA8N

 LBNL BIOSCI @LBNLBIOSCI · A YEAR AGO



Orange is the new red: advances in artificial #photosynthesis. #plant #cyanobacteria #BioMBIB #LBNLBioSciFlashback ow.ly/TedB3086pet pic.twitter.com/vCmOK9eG24

 LBNL BIOSCI @LBNLBIOSCI · A YEAR AGO



Resistance is not futile: [@jbei\\_](#) engineers [#ionicliquids](#) resistance [#biofuel](#) [#microbes](#) [#BioBSE](#) [#LBNLBioSciFlashback](#) [ow.ly/TedB3086pet](https://ow.ly/TedB3086pet) [pic.twitter.com/ehPs5fR9G0](https://pic.twitter.com/ehPs5fR9G0)

 LBNL BIOSCI [@LBNLBIOSCI](#) · A YEAR AGO