

Storify by LBNL BioSci a year ago

Biosciences Area's Women in History

Women's History Month, celebrated in March, highlights the contributions of women to events in history and contemporary society. Berkeley Lab's Biosciences Area celebrated the occasion by featuring women from the Area who are leaders in the scientific and operational fields.



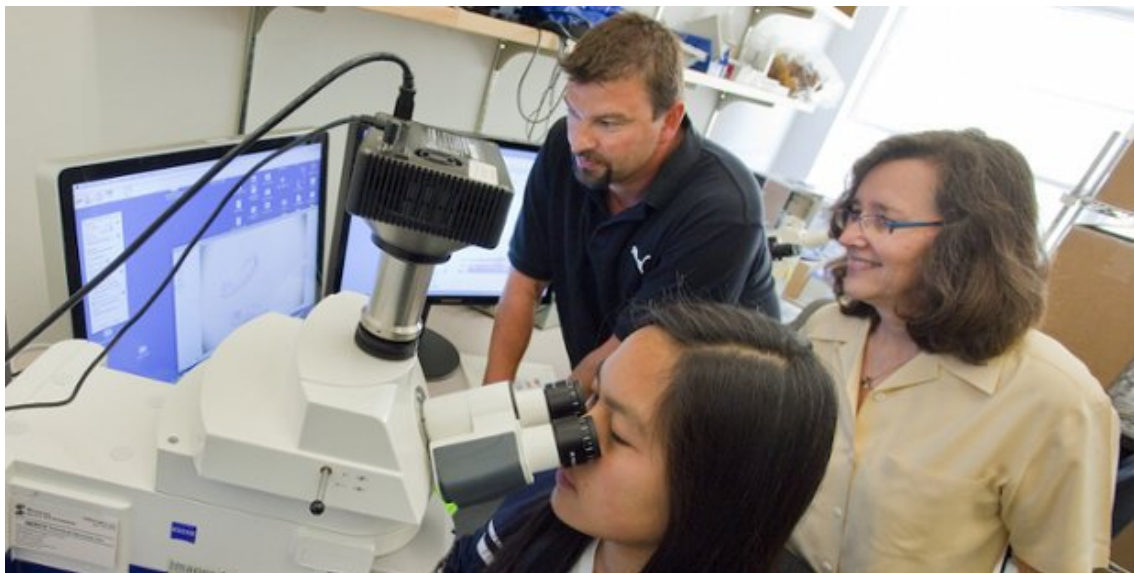
This #WomenInHistory month we're celebrating women @LBNLBioSci @BerkeleyLab!
#WomenInSTEM pic.twitter.com/vaeqhjj6N

 LBNL BIOSCI @LBNLBIOSCI · 2 YEARS AGO



Today we feature Helen Cademartori @LBNLBioSci Ops Deputy #WomenInHistory ow.ly/ZbdD9
pic.twitter.com/uHTYsyCgPS

 LBNL BIOSCI @LBNLBIOSCI · 2 YEARS AGO



ICYMI Learn about Susan Celniker 2016 George W. Beadle Awardee! #EGSB #WomenInHistory ow.ly/Zj48d pic.twitter.com/I4Xn7Nd47B

 LBNL BIOSCI @LBNLBIOSCI · 2 YEARS AGO



ICYMI Meet @deeptanjore #ABPDU #engineer, 2015 Women@theLab awardee #BSE #WomenInHistory ow.ly/Zj4E1 pic.twitter.com/CWZew6nyN6

 LBNL BIOSCI @LBNLBIOSCI · 2 YEARS AGO



Meet Eva Nogales [#scientist](#) [#CryoElectronMicroscopy](#) [#CRISPR-Cas9](#) [#MBIB](#) [#WomenInHistory](#)
ow.ly/ZbdVu pic.twitter.com/dVQLMZsGgX

 LBNL BIOSCI @LBNLBIOSCI · 2 YEARS AGO



Learn about Wenjun Zhang scientist [@BerkeleyLab](#) [@UCBerkeley](#) [#EGSB](#) [#WomenInHistory](#)
ow.ly/Zbe51 pic.twitter.com/V8XXO4SNO7

 LBNL BIOSCI @LBNLBIOSCI · 2 YEARS AGO



Today's featured #scientist is @aindrilam #microbes #biofuels @jbei_ #BSE #WomenInHistory
ow.ly/Z5ECS pic.twitter.com/KtUDLEUhvP

 LBNL BIOSCI @LBNLBIOSCI · 2 YEARS AGO



Meet Mary Maxon @LBNLBioSci Ops Principal Deputy, #Scientist. #WomenInHistory ow.ly/ZiWKv
pic.twitter.com/liELon2TXN

 LBNL BIOSCI @LBNLBIOSCI · 2 YEARS AGO



Learn about Emiley Eloie-Fadrosch's research [#Kryptonite](#) [@doe_jgi](#) [#WomenInHistory](#) ow.ly/ZiX0o
pic.twitter.com/wszaVp5asi

 LBNL BIOSCI @LBNLBIOSCI · 2 YEARS AGO



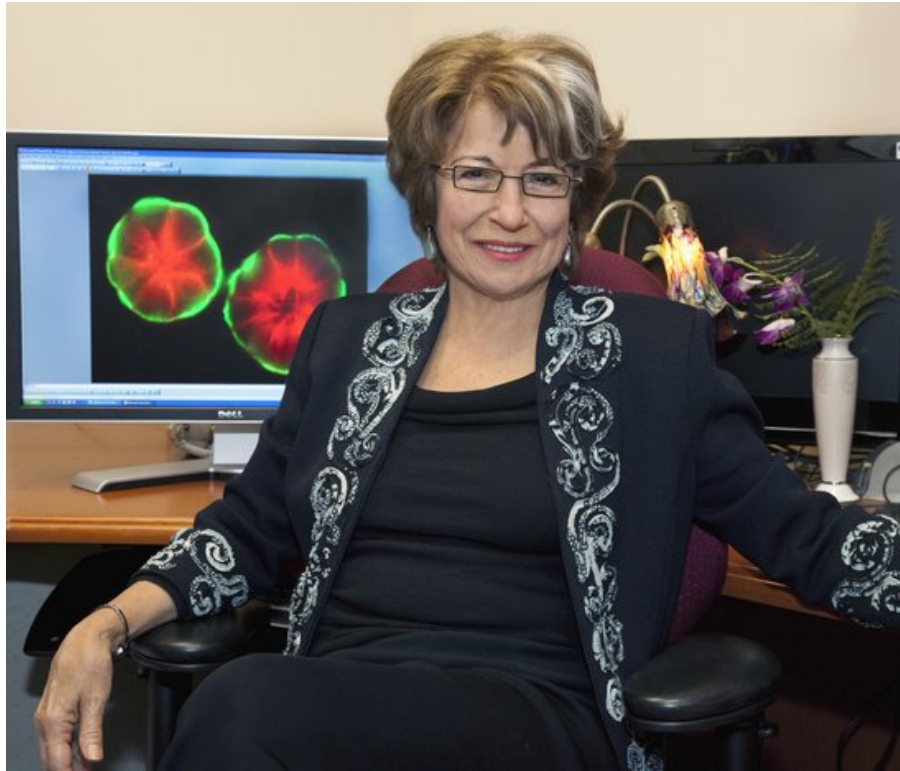
Celebrate Junko Yano, [#scientist](#), artificial [#photosynthesis](#) [#MBIB](#) [#WomenInHistory](#) ow.ly/ZiXaFpic.twitter.com/ljP9YraDzd

 LBNL BIOSCI @LBNLBIOSCI · 2 YEARS AGO



Meet Inna Dubchak [#scientist](#) [#crystallography](#) [#computational](#) [#EGSB](#) [@doe_jgi](#) [#WomenInHistory](#) ow.ly/ZiXkEpic.twitter.com/aIFyby3MWF

 LBNL BIOSCI @LBNLBIOSCI · 2 YEARS AGO



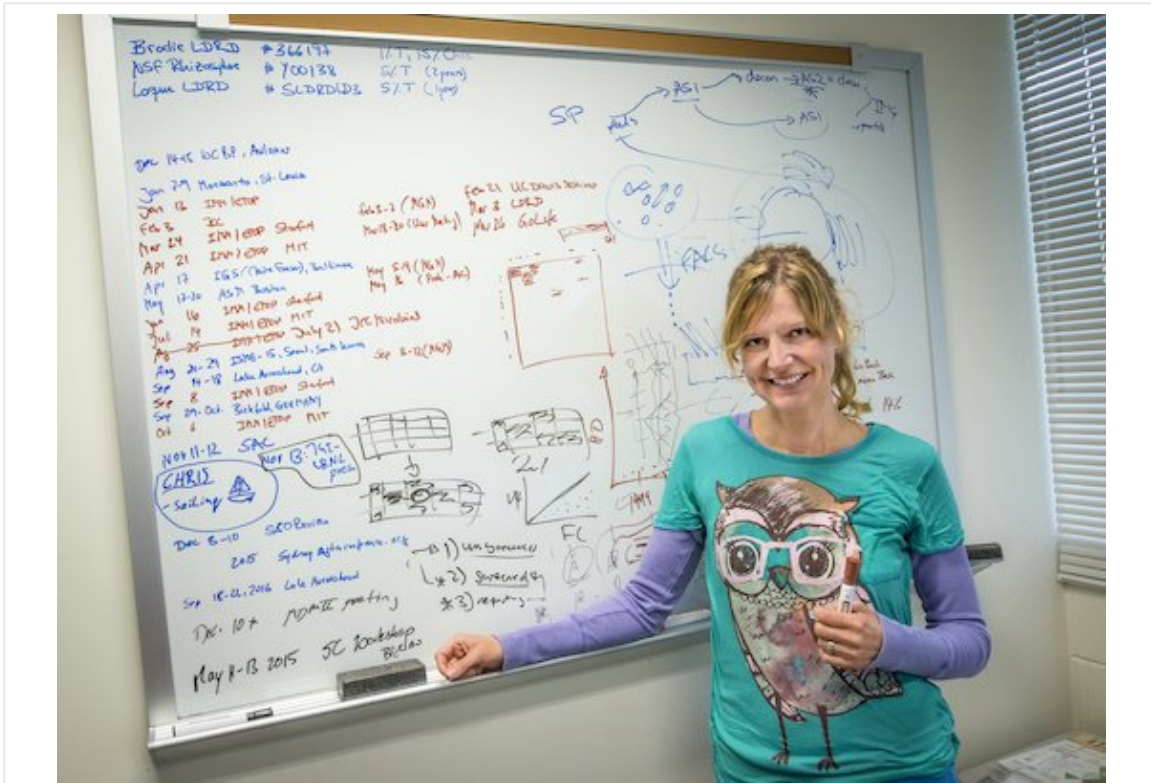
Mina Bissell #cancer research champion is making history @LBNLBioSci #BSE #WomenInHistory
ow.ly/ZiXwA pic.twitter.com/JwH2f7coVe

 LBNL BIOSCI @LBNLBIOSCI · 2 YEARS AGO



Meet Katy Christiansen [@LBNLBioSci](#) Strategic Analyst [@aaas](#) Fellow [#scientist](#) [#WomenInHistory](#)
[ow.ly/ZiXO4](#) [pic.twitter.com/IKDj3q9Vp9](#)

 LBNL BIOSCI [@LBNLBIOSCI](#) · 2 YEARS AGO



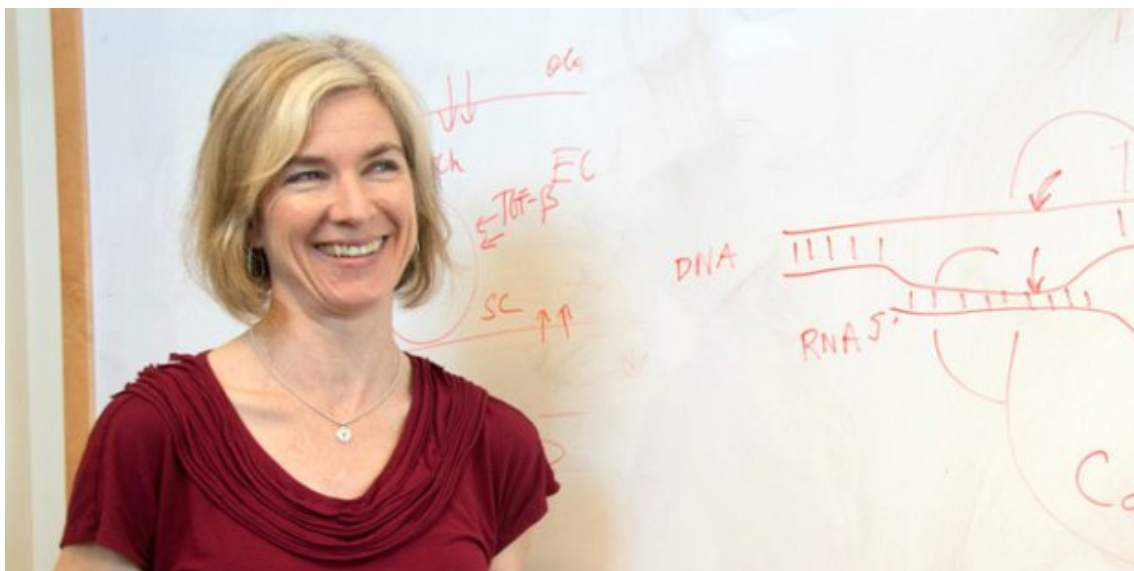
#Scientist Tanja Woyke contributes to #STEMEducation @doe_jgi #WomenInHistory ow.ly/ZiZ8t pic.twitter.com/dtFF4AfjHp

 LBNL BIOSCI @LBNLBIOSCI · 2 YEARS AGO



Today we feature Eleanor Blakely, [#ionbeams](#) hadron therapy [#scientist](#). [#BSE](#) [#WomenInHistory](#) ow.ly/ZiZqf pic.twitter.com/DrUWRnEDns

 LBNL BIOSCI @LBNLBIOSCI · 2 YEARS AGO



Meet Jennifer Doudna [#CRISPR-CAS9](#) [#inventor](#) [@UCBerkeley](#) [@BerkeleyLab](#) [#MBIB](#) [#WomenInHistory](#) ow.ly/ZiZEr pic.twitter.com/Vcwbvb5Fla

 LBNL BIOSCI @LBNLBIOSCI · 2 YEARS AGO



#Scientist Kjersten Fagnan is #data liaison extraordinaire @doe_jgi @NERSC #WomenInHistory
ow.ly/ZiZNr pic.twitter.com/OL3mvESSIW

 LBNL BIOSCI @LBNLBIOSCI · 2 YEARS AGO