

BERKELEY LAB



# BioSci Communiqué

02.23.16

## Upcoming Events

[Refer to the Area Events Calendar for more events, details, and up-to-date information.](#)

### February 23

POSTPONED | John Lawrence Seminar: *A Systemic Approach for Rejuvenating the Aging Brain* | Saul Villeda, University of California, San Francisco | 4 PM, Aquatic Park, Rm 977-141

### February 24

Area Brown Bag on Program Development and Funding @ Aquatic Park | Mary Maxon and Ivy Cliff | Noon, Rm 977-141

### February 25

JGI-LBL Lab Meeting: Natalie Wang, Sudha Rajderkar, and Natalia Ivanova present | 10:30 AM, Walnut Creek, Rm 100-149A

DOE JGI Science & Technology Meeting: *Antarctic Lake Microbial Communities: A window into ecology before the evolution of animals* | Dawn Sumner, UC Davis | 2 PM, Walnut Creek, Rm 100-149A

### February 26

MBIB Special Seminar: *Challenges and Opportunities in the Optical Imaging of Biological Systems* | Eric Betzig, HHMI Janelia Farm | 1 PM, Bldg 55 Auditorium

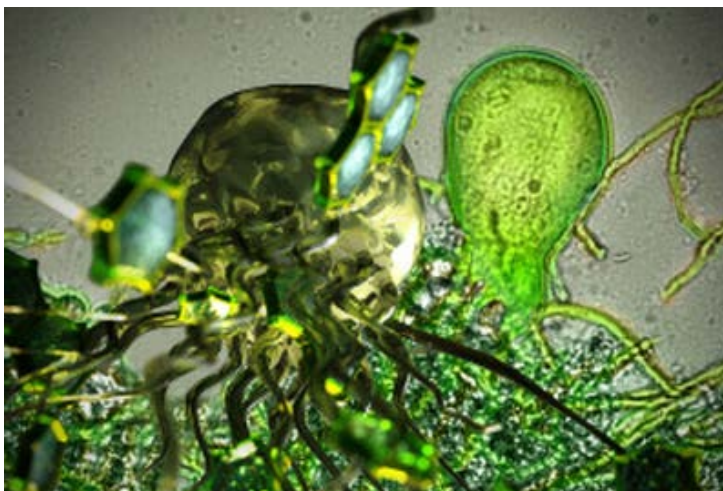
### March 1

John Lawrence Seminar: *Insights into Development and Disease from Protein-RNA*

## News Roundup

- Biofuel Tech Straight from the Farm >>
- Caribou Biosciences Receives Intellectual Property Rights for CRISPR Technology >>
- DOE JGI Debuts Animation about National User Facilities >>
- JBEI Invention Leads to More Efficient Biofuel Production for Industrial Application >>
- Raising the Bar for Bacterial Interactions Networks >>
- "The Tale of the Bacteria Farmer" with JBEI's Sarah Richardson >>

More news on the Biosciences Area [website](#).



## Divisions/User Facility Highlights

### Daily Cal Highlights Kerfeld's Work

A February 8 [Daily Cal story](#) on new findings into bacterial nano-compartments looked at research by Cheryl Kerfeld, faculty scientist in the Molecular Biophysics and Integrated Bioimaging (MBIB) Division. The work, published in the *Journal of the American Chemical Society*, first appeared in a Berkeley Lab [news release](#).

### JGI Seeking Letters of Intent for Large-Scale Science Proposals

The Community Science Program (CSP) Annual Call is focused on large-scale sequence-based genomic science projects that address questions of relevance to DOE missions in sustainable biofuel production, global carbon cycling, and biogeochemistry. While applications will be accepted that address any aspect of these mission areas, priority for this call will be given to projects that address the specific areas of special emphasis that are listed in the call, and exploit the diversity of JGI technical and analytical capabilities. Letters of intent are due April 7. More information can

*Interactions* | Gene Yeo, University of California, San Diego | 4 PM, Aquatic Park, Rm 977-141

## March 2

JBEI Seminar Series: *Title TBD* | Philip B. Duffy, Woods Hole Research Center | Noon, Emery Station, Rm 978-4132 & 4134

Berkeley Lab Innovation Corps (BLIC) Meeting: *The Venture Capital Landscape* | Doug Collom, The Wharton School San Francisco and Wilson Sonsini Goodrich & Rosati | Noon, Bldg 66 Auditorium

## Events Highlights

### Special MBIB Seminar by 2014 Nobel Laureate

Eric Betzig, Group Leader at HHMI's Janelia Research Campus, will present a special Molecular Biophysics & Integrated Bioimaging (MBIB) Division seminar, "Challenges and Opportunities in the Optical Imaging of Biological Systems," on February 26 at 1 PM, in the Building 50 Auditorium. [Betzig received his 2014 Nobel Prize in Chemistry](#) for the development of high-resolution fluorescence microscopy methods.



Eric Betzig presents a Special MBIB Seminar on Feb. 26.

**Philanthropy Program  
Development Module**

be found [here](#).



### Seagrass in the Spotlight

The analysis of the seagrass genome, a partnership with JGI user Jeanine Olsen of the Groningen Institute of Evolutionary Life Sciences, provided insights into the development of salt tolerance. This [research](#) is featured on the cover of the February 18 issue of [Nature](#).

## Area News

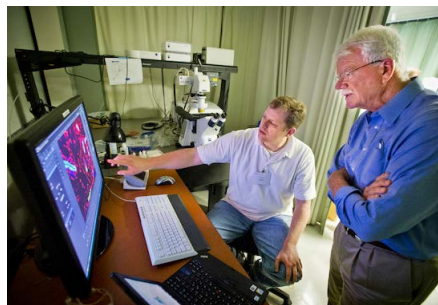
### Updated LDRD FY17 Schedule

There has been a change in the LDRD FY17 schedule for the Biosciences Area: The M2B Lab-wide Initiatives proposals will now be reviewed one week earlier than previously announced, on April 13, 1:30 - 5:30 PM. Refer to the revised schedule [here](#).

### Biosciences Advanced Microscopy/FACS Facility

Sylvain Costes, of the Biological Systems & Engineering (BSE) Division, introduced the Biosciences [Advanced Microscopy](#) and [Cytometry Facility](#) at the monthly Luncheon Speaker Series for Aquatic Park Center tenants, and their colleagues, on February 19. The facility is located at the Aquatic Park Operations Center (717 Potter street) and is available to all Berkeley Lab staff, as well as external users.

The facility was established to provide researchers with state of the art instruments for high resolution imaging of biological samples mainly using epifluorescence techniques. Key microscopes include two Zeiss confocals 710 with live cell capability, a super resolution structure illumination microscope with live cell capability as well and a high throughput Arrayscan from Cellomics.



The facility also includes two high-end flow cytometers for cellular analysis and cell sorting, again using fluorescence for marking targets of interest. It offers several services including sample processing. (Photo: Former U.S. Congressman George Miller (r) touring the facility in 2012, here with Curt Hines.)

For more information, contact Facility Director [Sylvain Costes](#) or Facility Manager [Michelle Scott](#); or visit the [Facility website](#).

## Program Development

Missed the first two brown bags for the philanthropy program development module, organized by the Biosciences Area Office? The next will be held on February 24, noon, at the Aquatic Park Operations Center, Room 977-141. (The February 23 Emery Station brown bag has been postponed. Check the [Area Events Calendar](#) for the new date.)

### Still Time to Register/Submit Abstract for JGI Annual Meeting

Space is running out fast for [JGI's 11th Annual Genomics of Energy & Environment Meeting](#), March 22 - 24 in Walnut Creek. All poster abstracts are due by March 7. [Workshops](#) precede the main event and include KBase, Fungal Genomics, NERSC: Reproducible Bioinformatics Pipelines, Synthetic Biology, Genomic Technologies, and Sample QC. [Register](#) now.



### Be a Biosciences Twitter Ambassador!

Did you know the Biosciences Area is on Twitter? Launched last month, @LBNLBioSci aims to spread the latest on the Area's news and achievements. We already gathered 109 followers and a total of 12,978 tweet impressions! Help us keep up the momentum with three simple steps:

1. Follow [@LBNLBioSci](#)
2. Re-tweet [@LBNLBioSci](#) tweets

### FutureBio, Focus on the Foundry

[FutureBio](#), a Biosciences initiative, is a single integrated institute that aims to dramatically shorten the time from discovery to commercialization of bioproducts through transformative advancements in computer-assisted biological engineering. Strategic efforts are underway to build a foundry at the center of the FutureBio Institute with national lab, university, federal agency, and industry partners.

> DOE's Transportation Working Group met at Berkeley Lab on February 17. DOE staff explained their concept for a foundry and highlighted the work of Nathan Hillson (BSE) and others to establish a proof-of-concept foundry.

> DOE Energy Efficiency and Renewable Energy's (EERE) Deputy Assistant Secretary for Transportation and staff from the Bioenergy Technologies Office visited JBEI and the ABPDU on February 19 to better understand what Berkeley Lab and its national lab partners need to build a fully functional foundry.

> DOE EERE has requested \$35M in the FY17 budget to fund a biofoundry that unites the capabilities of the national labs. If the funding is appropriated, Berkeley Lab anticipates participating in the consortium with the possibility of leading it.

> An industry "listening day" will be held on March 15 in Berkeley to gather critical feedback on how the foundry may address key R&D barriers for engineering biology, process integration, and scaling to relevant production scales.



### Funding Opportunities

#### LDRD Initiative: Novel Computing Technologies

For the Exploration of Novel Computing Technologies LDRD Initiative, there will be a meeting with presentations from each of the currently funded projects and time for new ideas to be presented on February 25 at 3 PM in Room 59-4101. Proposals are encouraged in the foundational areas for new computing models and algorithms for novel technologies, as well as cross-area collaborations to demonstrate novel technologies and their relevance to scientific problems.

As this is the second year for this initiative, maybe only 1-2 new awards are anticipated being made. Contact Computing Sciences Area Deputy [Jonathan Carter](#) to schedule a time slot to present. More on the Lab LDRD website [here](#).

#### 2016 SIMB Diversity Travel Awards

The Society for Industrial Microbiology & Biotechnology (SIMB) [Diversity Committee](#) is offering two travel awards of \$500 each to a female or underrepresented minority graduate student to participate in the 2016 SIMB Annual Meeting. The award also includes a one-year SIMB student membership.

Applicants must be a U.S. citizen or permanent resident, a current graduate student, and the presenting author of an accepted poster or oral presentation. The Annual Meeting Diversity Travel Award



3. Tag us in your tweets by adding @LBNLBioSci

We are also launching a Twitter Ambassador Program for those of you who would like to go the extra mile with @LBNLBioSci. Want to learn more? Email [bioscomms@lbl.gov](mailto:bioscomms@lbl.gov).

application process can be found [here](#). Submission deadline: March 1, 2016.

---

## Innovation and Partnerships Office (IPO)

### Venture Capital Landscape Insights

Get insights on the Venture Capital landscape from [Doug Collom](#), Professor of Venture Capital and Entrepreneurial Management at The Wharton School's Executive MBA Program in San Francisco and a partner with Wilson Sonsini Goodrich & Rosati, at the next Berkeley Lab Innovation Corps ([BLIC](#)) meeting on March 2, noon - 1 PM, Bldg 66 Auditorium. BLIC is open to all Berkeley Lab staff.

### Lab Space Available for Startups

Ready to advance your startup? Apply by March 3 for Momentum, a shared West Berkeley lab space managed by the Lab's Innovation and Partnerships Office (IPO) and open to Lab employees founding a company on Berkeley Lab technology. Email questions and send completed application [form](#) to [techoutreach@lbl.gov](mailto:techoutreach@lbl.gov). Note: Momentum offers wet lab space rather than office space.

---



Lawrence Berkeley National Laboratory, Biosciences Area  
One Cyclotron Road, Berkeley, CA 94720  
[biosciences.lbl.gov](http://biosciences.lbl.gov)

You are receiving this email because you are on staff or affiliated with the Biosciences Area of Berkeley Lab and therefore part of the autogenerated Level-0 Area email list.

Send suggestions and feedback to [bioscomms@lbl.gov](mailto:bioscomms@lbl.gov).

[Unsubscribe from this list.](#)

MailChimp