

Storify by LBNL BioSci a year ago

# Biosciences Supports 2017 Earth Week

The Biosciences Area celebrated Earth Week by highlighting the Area's efforts towards sustainability.



It's #EarthWeek! #Sustainability #Science #SaveOurPlanet [pic.twitter.com/C30sRujWGN](https://pic.twitter.com/C30sRujWGN)

 LBNL BIOSCI @LBNLBIOSCI · A YEAR AGO



Could this [#enzyme](#) help turn [#biofuel](#) waste into something useful? [#EarthWeek](#) [#Sustainability](#) [#BioBSE](#) [@jbei\\_ow.ly/Q0Cs30aOxxr](#) [pic.twitter.com/nNBzFNoTcT](#)

[LBNL BIOSCI](#) [@LBNLBIOSCI](#) · A YEAR AGO



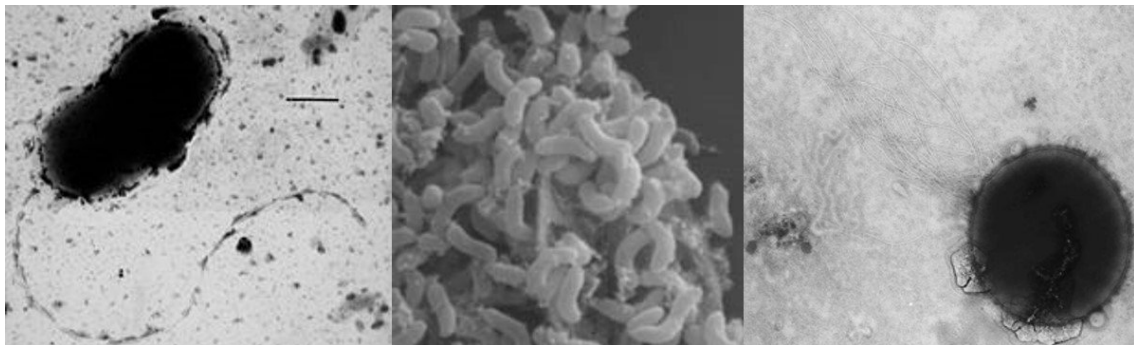
Plant Fast Food: Berkeley researchers turbocharge [#photosynthesis](#). [#BioMBIB](#) [#EarthWeek](#) [ow.ly/dUgD30aLWMP](#) [pic.twitter.com/ZNPTncR3T2](#)

[LBNL BIOSCI](#) [@LBNLBIOSCI](#) · A YEAR AGO



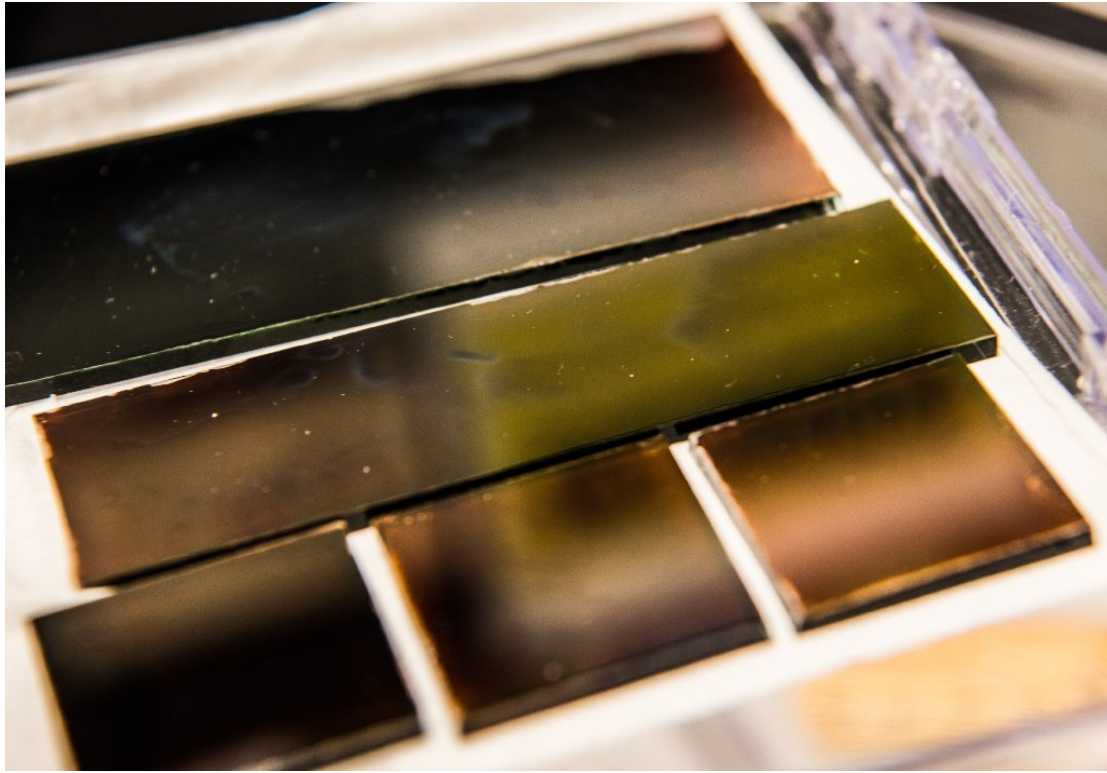
Nitrogen uptake btw [#fungi](#) & [#orchids](#): gene expression gives clues to nitrogen pathways [@doe\\_jgi](#)  
[#EarthWeek](#) [ow.ly/qlVA30al82w](#) [pic.twitter.com/PFf2O3kzob](#)

 LBNL BIOSCI [@LBNLBIOSCI](#) · A YEAR AGO



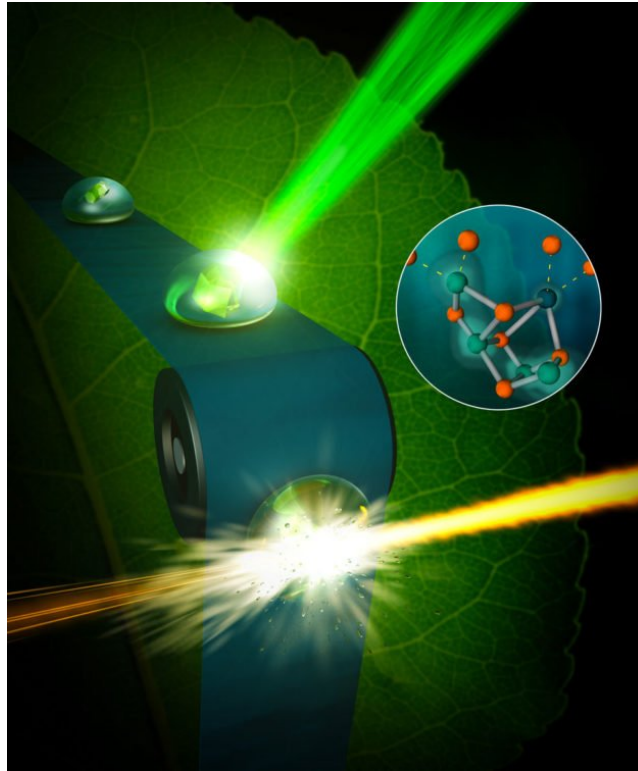
Researchers [@ISBUSA](#) & ENIGMA uncover factors in microbial community collapse [#ecosystem](#)  
[#BioEGSB](#) [#EarthWeek](#) [ow.ly/JsxL30aJNU9](#) [pic.twitter.com/OfSNVz9yEd](#)

 LBNL BIOSCI [@LBNLBIOSCI](#) · A YEAR AGO



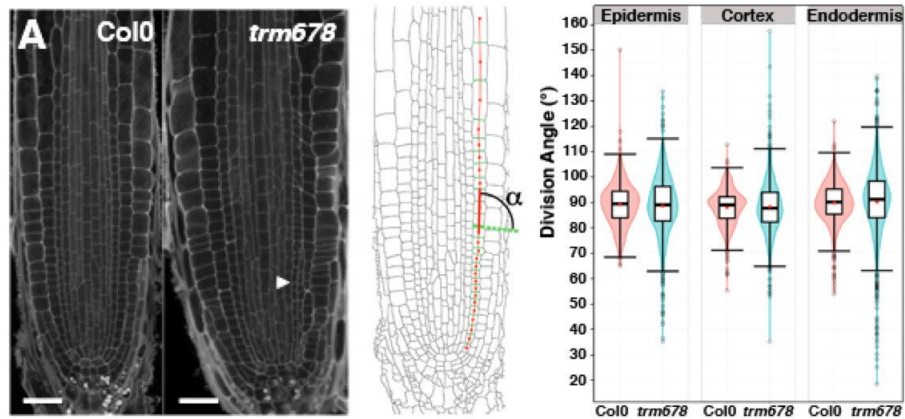
[.@NREL](#) science opens window 4 future quality, scalable solar cells w/ new perovskite ink  
[bit.ly/2peVEKc](http://bit.ly/2peVEKc) #EarthWeek @NatureEnergyJnl [pic.twitter.com/Fikx8anC3O](https://pic.twitter.com/Fikx8anC3O)

 LBNL BIOSCI @LBNLBIOSCI · A YEAR AGO



X-rays capture unprecedented images of [#photosynthesis](#) in action [#EarthWeek](#) [#BioMBIB](#)  
[ow.ly/F66S30aOxEM](https://ow.ly/F66S30aOxEM) [pic.twitter.com/qrKNBOzaGk](https://pic.twitter.com/qrKNBOzaGk)

 LBNL BIOSCI @LBNLBIOSCI · A YEAR AGO



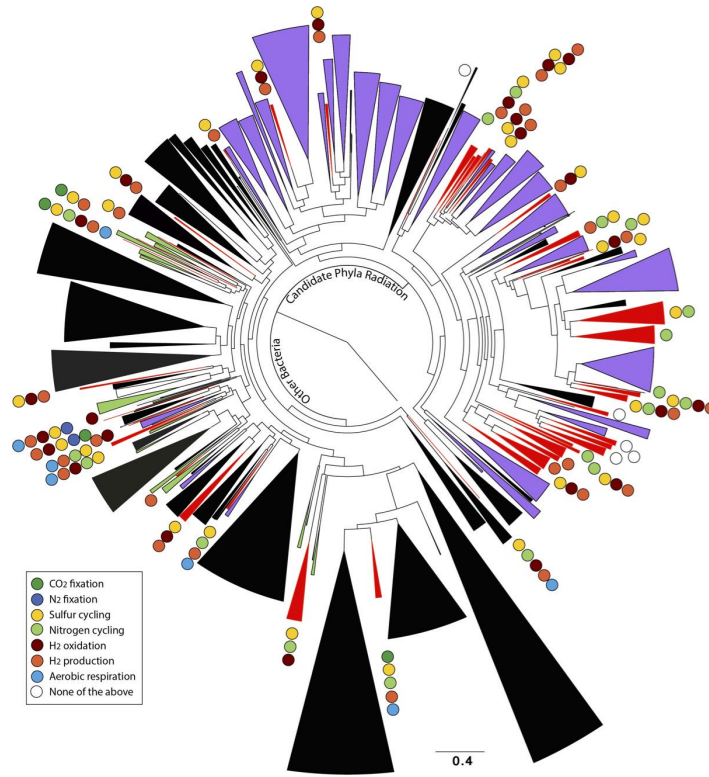
New @sciencemagazine @LBNLBioSci study provides further insight into #plantcell division [ow.ly/ux0J30aXn4O](https://ow.ly/ux0J30aXn4O) #EarthWeek [pic.twitter.com/KIF2do8NqY](https://pic.twitter.com/KIF2do8NqY)

LBNL BIOSCI @LBNLBIOSCI · A YEAR AGO



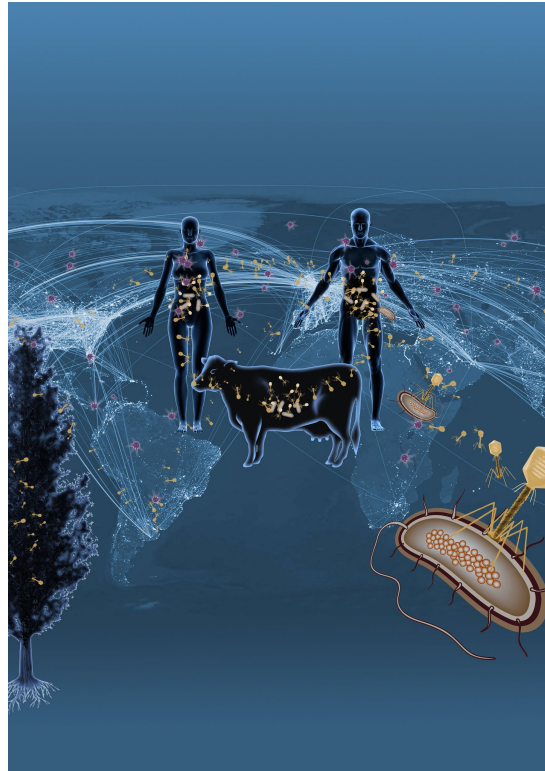
Grasses: The secrets behind their stomatal success @doe\_jgi #bioenergy @Stanford @carnegiescience #EarthWeek [ow.ly/pn5n30aBFqP](https://ow.ly/pn5n30aBFqP) [pic.twitter.com/pOkNRQMqYP](https://pic.twitter.com/pOkNRQMqYP)

LBNL BIOSCI @LBNLBIOSCI · A YEAR AGO



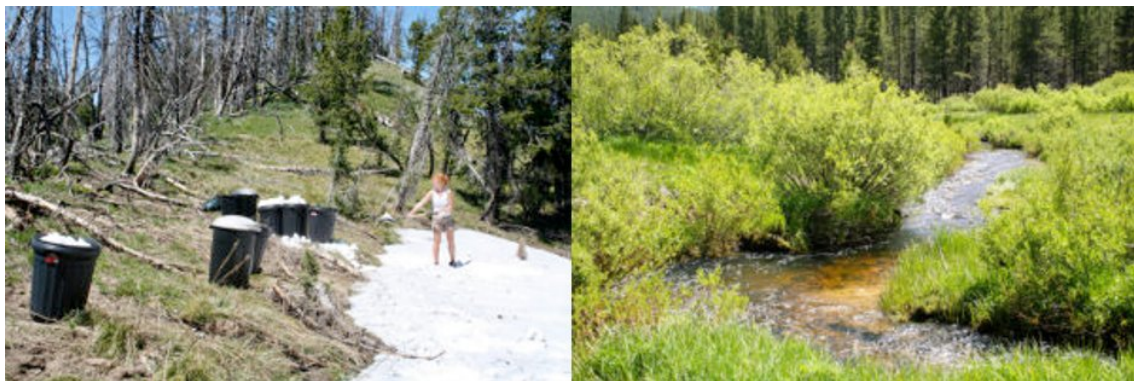
New [#bacteria](#) groups, and stunning diversity, discovered underground [#EarthWeek](#) [#BioEGSB](#)  
[ow.ly/qmzy30aOxKB](http://ow.ly/qmzy30aOxKB) [pic.twitter.com/KXFEjY4HhY](https://pic.twitter.com/KXFEjY4HhY)

 LBNL BIOSCI @LBNLBIOSCI · A YEAR AGO



Team @doe\_jgi unveiled #Earth's viral diversity #EarthWeek [ow.ly/Qup130aOxVT](https://ow.ly/Qup130aOxVT)  
[pic.twitter.com/5ko1h5YxTC](https://pic.twitter.com/5ko1h5YxTC)

 LBNL BIOSCI @LBNLBIOSCI · A YEAR AGO



Mustard plant fitness demonstrates speciation in nature @doe\_jgi #genome #EarthWeek  
[ow.ly/DzRF30aOdsf](https://ow.ly/DzRF30aOdsf) [pic.twitter.com/HUDZAHnVp8](https://pic.twitter.com/HUDZAHnVp8)

 LBNL BIOSCI @LBNLBIOSCI · A YEAR AGO





Compact [#CRISPR](#) systems found in some of world's smallest [#microbes](#). [#EarthWeek](#) [#BioEGSB](#) [#BioMBIB](#) [ow.ly/7gD930aOxZz](https://ow.ly/7gD930aOxZz) [pic.twitter.com/f0KwqazQvR](https://pic.twitter.com/f0KwqazQvR)

 LBNL BIOSCI @LBNLBIOSCI · A YEAR AGO



A salt marsh near St. Augustine, Florida. Coastal environments supporting seagrasses, salt marshes and mangroves are storehouses for vast reserves of organic carbon known as blue carbon.

MT [@EMSLscience](#) Scientists [@UF](#), [@PNNLab](#) using EMSL & [@doe\\_jgi](#) to study conversion of blue carbon to CO<sub>2</sub>: [goo.gl/v0owFz](https://goo.gl/v0owFz) [#EarthWeek](#) [pic.twitter.com/czytNEs3PB](https://pic.twitter.com/czytNEs3PB)

 LBNL BIOSCI @LBNLBIOSCI · A YEAR AGO





Happy #EarthDay! #Sustainability #Science #SaveOurPlanet #EarthWeek  
[pic.twitter.com/8A9gJVTqyU](https://pic.twitter.com/8A9gJVTqyU)

 LBNL BIOSCI @LBNLBIOSCI · A YEAR AGO