

Storify by LBNL BioSci a year ago

Biosciences Area Science Innovation & Commercialization

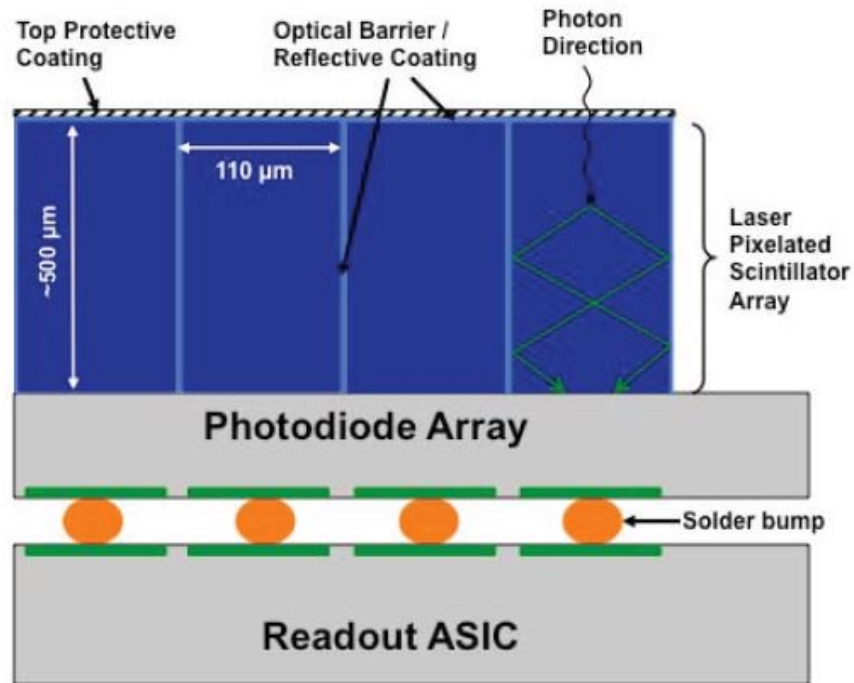
Here are a few science innovation and commercialization efforts from Berkeley Lab's Biosciences Area. More technologies are available at <http://ipo.lbl.gov>.



SCIENCE INNOVATION & COMMERCIALIZATION @LBNLBIOSCI

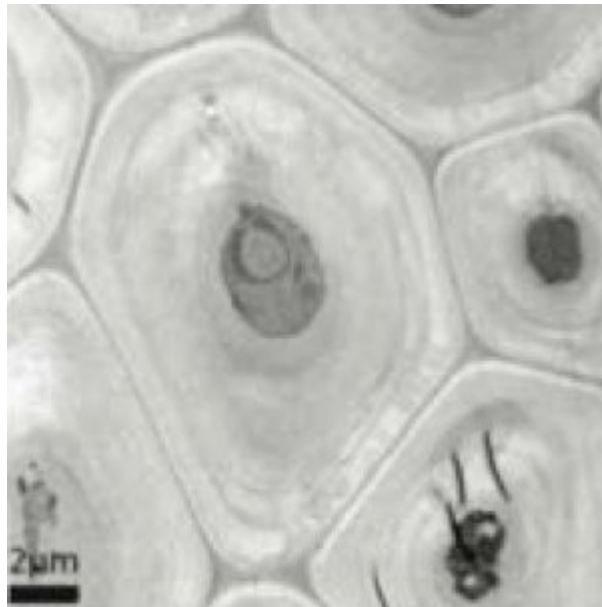
For the rest of the month [@LBNLBioSci](#) will highlight its [#science](#) [#innovation](#) [#commercialization](#) efforts. Follow them here! pic.twitter.com/s44lz2zUtl

 LBNL BIOSCI [@LBNLBIOSCI](#) · A YEAR AGO



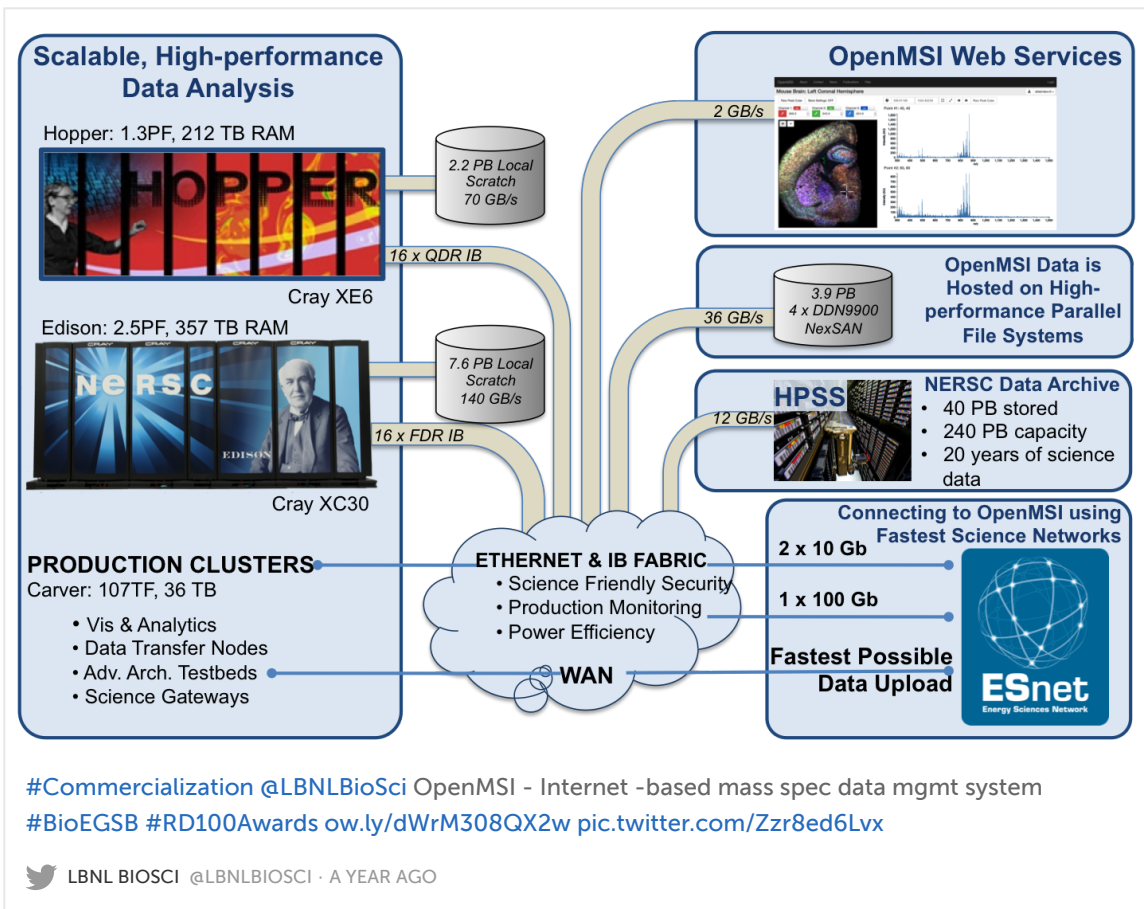
[#Commercialization @LBNLBioSci](#) Modular energy-discriminating photon counting detectors 4 X-Ray imaging [#BioMBIB ow.ly/N9mV308QVVa](#) [pic.twitter.com/nFowm14zWV](#)

[LBNL BIOSCI @LBNLBIOSCI · A YEAR AGO](#)



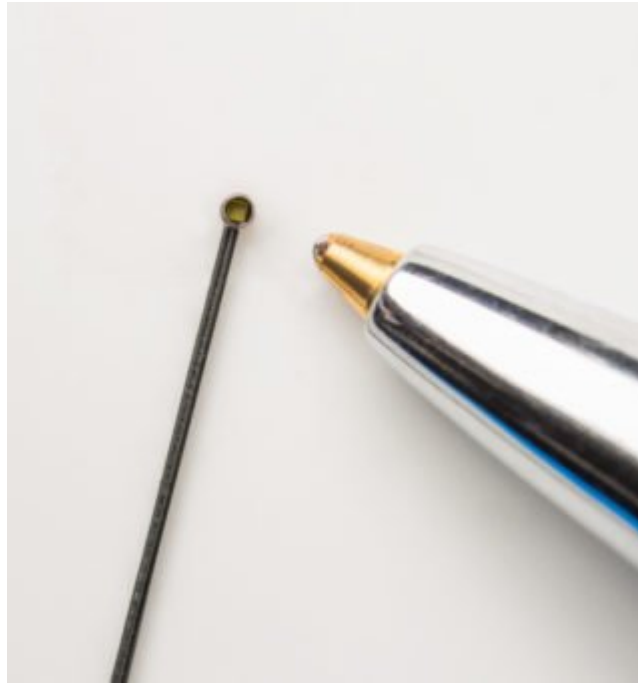
[#Commercialization @LBNLBioSci](#): Tissue specific [#cellwall](#) engineer. 4 [#biofuels](#) & [#biomaterials](#) [#BioBSE #RD100Awards ow.ly/kwfZ308QWkA](#) [pic.twitter.com/rJ9IYusfef](#)

[LBNL BIOSCI @LBNLBIOSCI · A YEAR AGO](#)



#Commercialization @LBNLBioSci: An approach to integrate & express pathways in a broad range of #bacteria @doe_jgi ow.ly/2fw8308QXl6 pic.twitter.com/l6NY5z3nmk

LBNL BIOSCI @LBNLBIOSCI · A YEAR AGO



[#Commercialization @LBNLBioSci](#) Compact Dynamic Beamstop helps treat [#cancers](#) & other diseases [#BioMBIB](#) [#RD100Awards](#) ow.ly/Kcdd308QXvQ pic.twitter.com/VDZCaZo8VU

LBNL BIOSCI @LBNLBIOSCI · A YEAR AGO

SIREN Platform

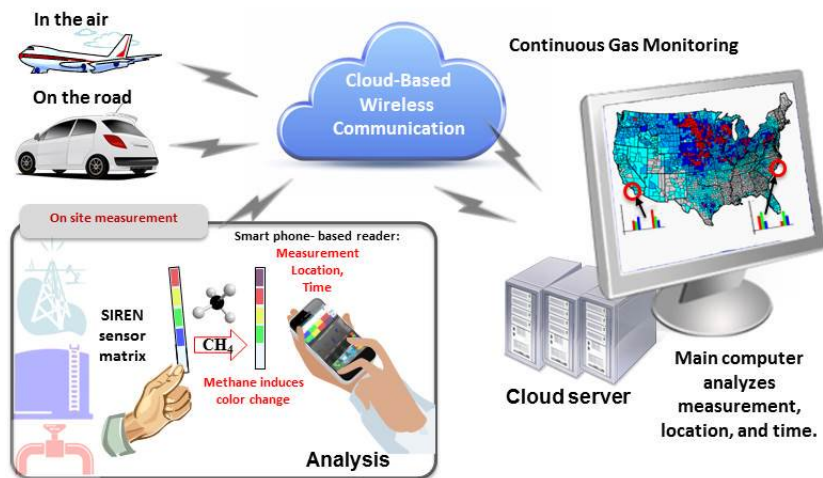


Figure 1. The SIREN Platform - Using a phage color film, we enable smart phones to selectively and sensitively achieve colorimetric sensing. These smart phones will detect desired gases (i.e., methane and ethane) including date and location information, upload them to cloud servers wirelessly from various locations or any arbitrary site travelled by automobiles or unmanned airplanes. The collected data will then be analyzed further via the cloud for continuous monitoring of the desired gases.

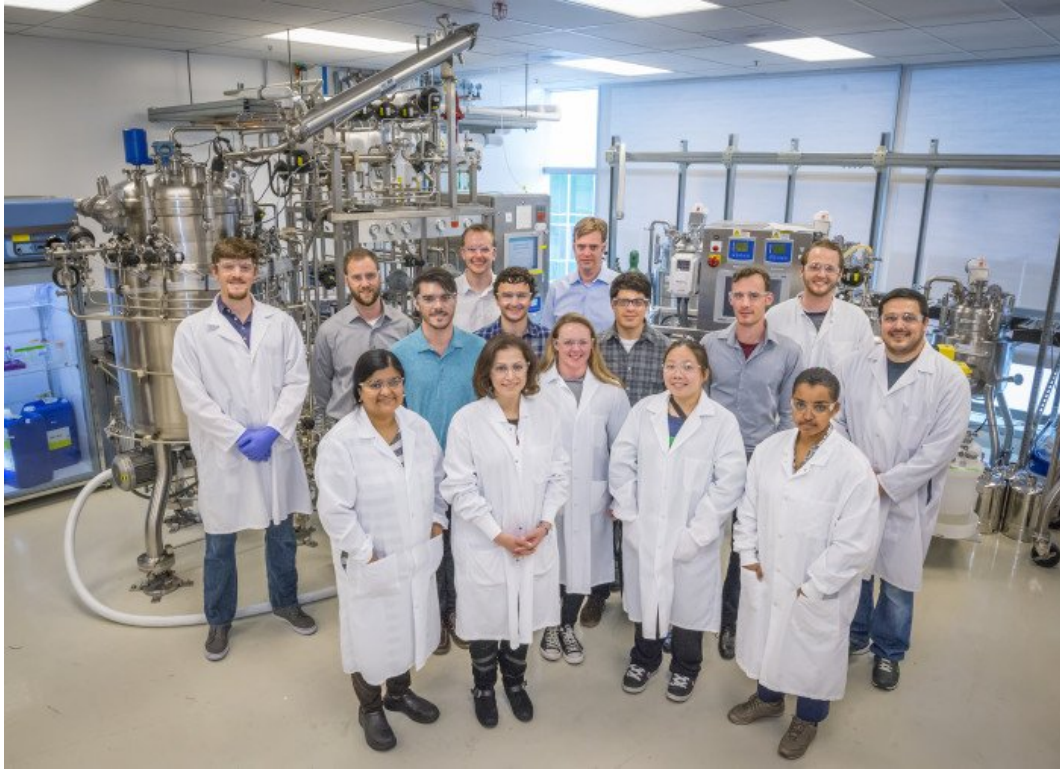
[#Commercialization @LBNLBioSci](#) Sensor integrated w/recombinant & engineered nanophage platform [#BioBSE](#) [#RD100Awards](#) ow.ly/lgpc308QZNd pic.twitter.com/RspksWahxf

LBNL BIOSCI @LBNLBIOSCI · A YEAR AGO



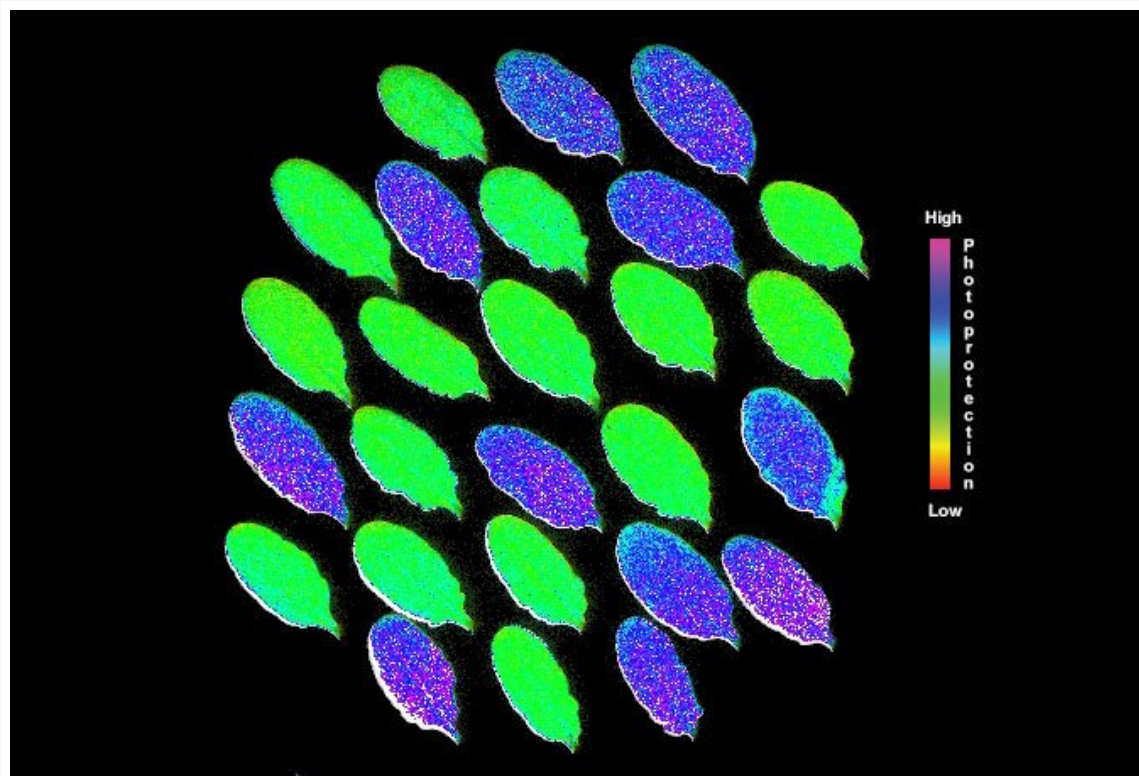
[#Commercialization @LBNLBioSci](#) Toaster software: Optimizing [#CRISPR](#) technologies for [#genome](#) editing [#BioBSE](#) ow.ly/sPB0308QYU2 pic.twitter.com/LB9ZpADNum

 [LBNL BIOSCI @LBNLBIOSCI](#) · A YEAR AGO



#Commercialization @LBNLBioSci #ABPDU & @LygosBiotech at the forefront of biobased chemical production #BioBSE ow.ly/u8WR308QXXP pic.twitter.com/TEJMNC0vQt

 LBNL BIOSCI @LBNLBIOSCI · A YEAR AGO



[#Commercialization @LBNLBioSci](#) Optimizing [#photosynthesis](#) w/an enzyme from green [#algae](#)
[#BioMBIB](#) ow.ly/zAFg308QYFO pic.twitter.com/at8jkykqaa

 LBNL BIOSCI @LBNLBIOSCI · A YEAR AGO